

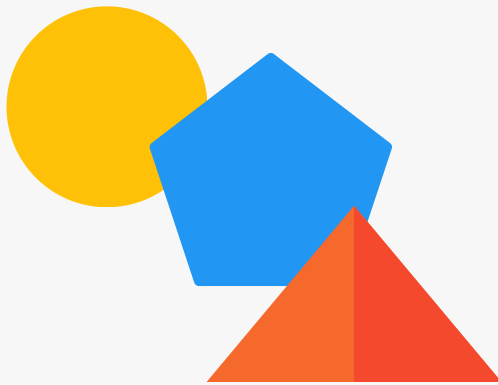
SHAPES

AN ELEMENT OF DESIGN

Shape is a two dimensional area enclosed by a boundary such as an obvious line or an implied line.

We make shapes with lines and color.

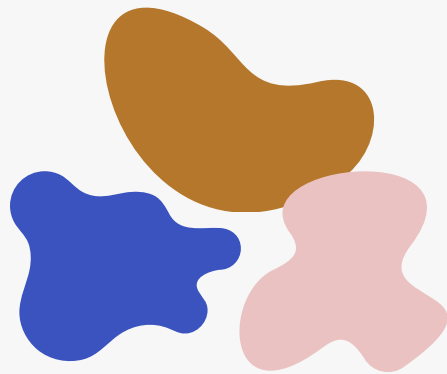
Geometric Shapes



They have their own name.

Usually angular and found in man-made objects.

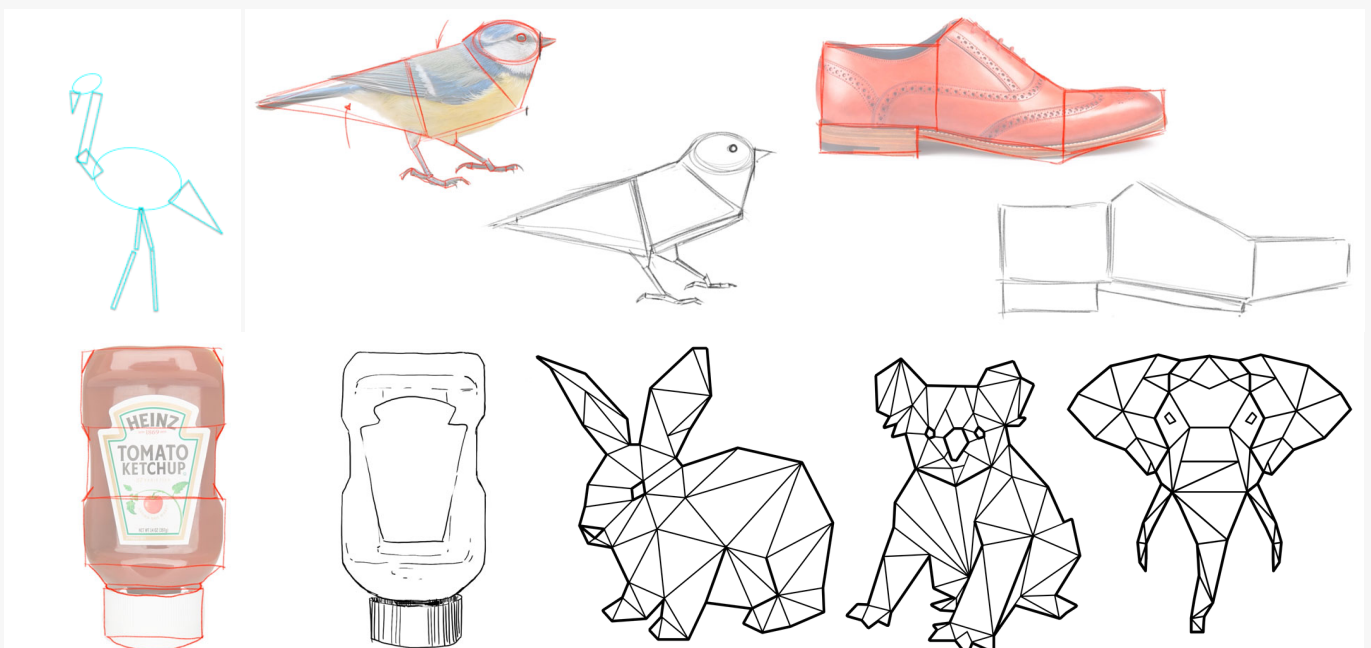
Organic Shapes



They don't have their own name.

More rounded and appear most often in nature.

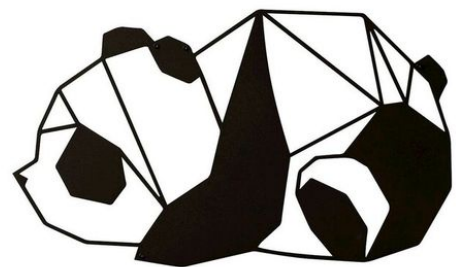
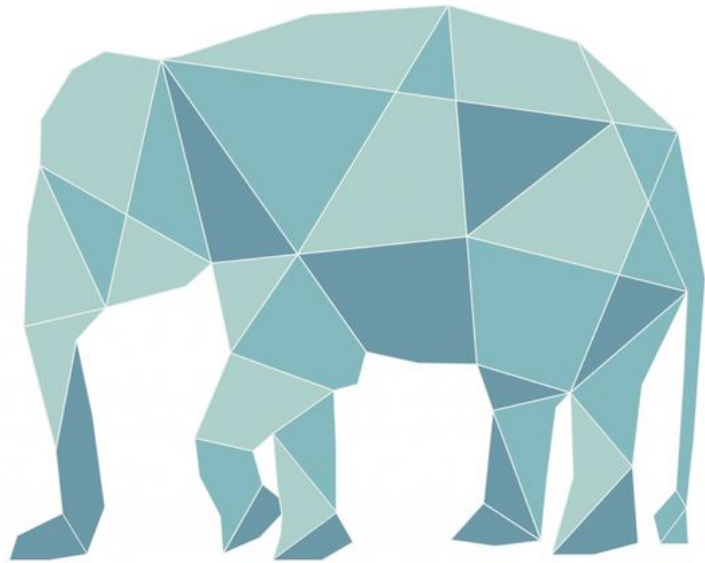
Artists assert that if you can draw the shapes, you can draw anything.



SHAPES

ARTWORKS YOU CAN MAKE FROM SHAPES.

Geometric Shapes



SHAPES

ARTWORKS YOU CAN MAKE FROM SHAPES.

Organic Shapes



SHAPES

ARTWORKS YOU CAN MAKE FROM SHAPES.

Mix of both

